

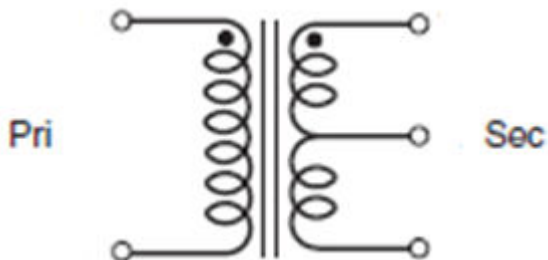
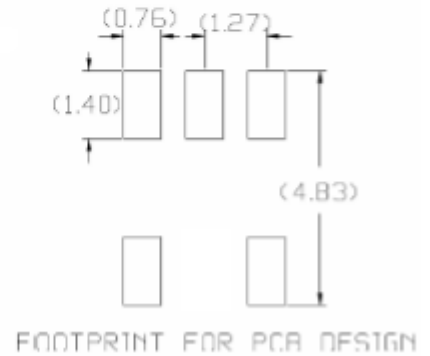
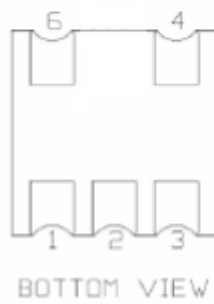
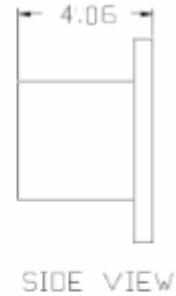
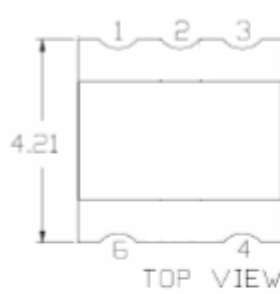
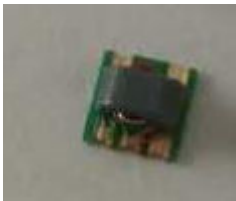
1:1 RF transformer **Frequency: 0.3-500MHZ.**

Base dimension

Feature:

- .1 : 1 impedance transformer.
- .SMT part.
- .Packaging 2000pcs per ree.
- .used in 50ohm systems.
- Weld connected.

**ROHS COMPLIANT**



SCHEMATIC

### Maximum Ratings

Operating Temperature	-40°C to 85°C
Storage Temperature	-55°C to 100°C
RF Power	0.25W
DC Current	30mA

Permanent damage may occur if any of these limits are exceeded.

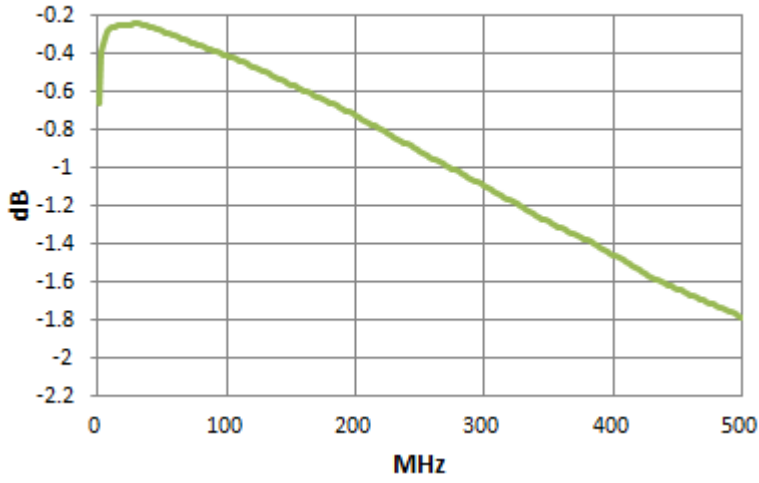
### Pin Connections

PRIMARY DOT	6
PRIMARY	4
SECONDARY DOT	1
SECONDARY	3
SECONDARY CT	2

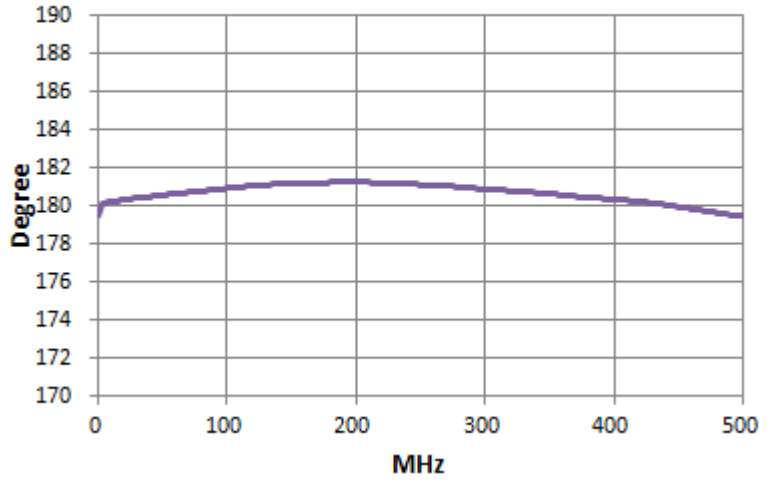
Electrical Specifications: TA=25°C, Zo=50Ω

Parameter	Test Conditions	Units	Min.	Typ.	Max.
<b>Insertion Loss</b>	0.5-300MHz	dB	---	---	2.0
	1-100MHz	dB	---	---	1.0
	0.3-500MHz	dB	---	---	3.0
<b>Input Return Loss</b>	0.3-500MHz	dB	8	---	---
	1-100MHz	dB	16	---	---
	100-500MHz	dB	6	---	---
<b>Phase Unbalance</b>	0.3-500MHz	degree	----		+/-5.0°
<b>Amplitude Unbalance</b>	0.3-500MHz	dB	---		+/-0.6
<b>RF Power Rating (max)</b>			250mw		
<b>DC Current Rating (max)</b>			30mA		
<b>Test Impedance (50Ω,75Ω, etc.)</b>			50OHM		

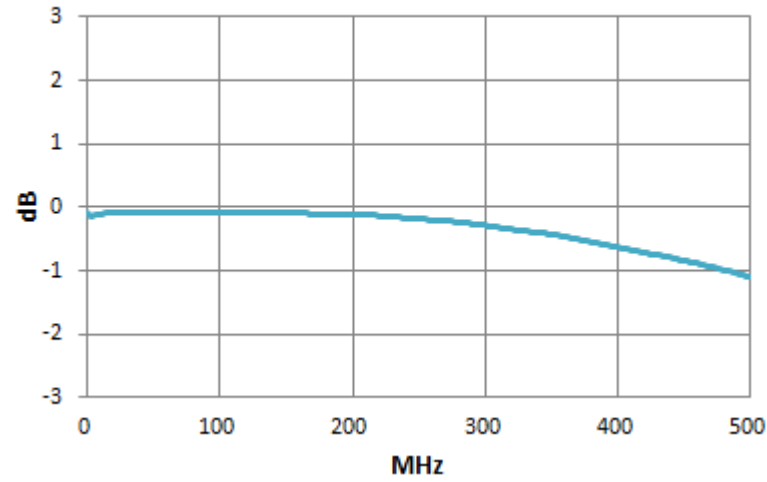
**Insertion Loss**



**Phase**



**Amplitude**



**Input Return Loss**

