

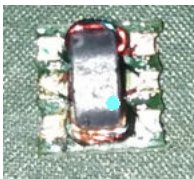


2Way 0° Divide transformer Frequency: 5-1250MHZ.

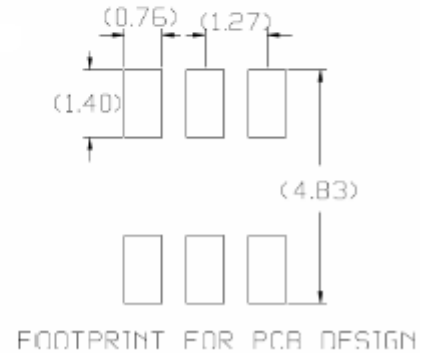
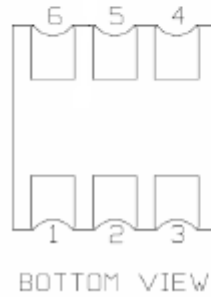
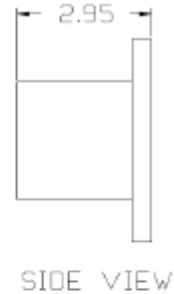
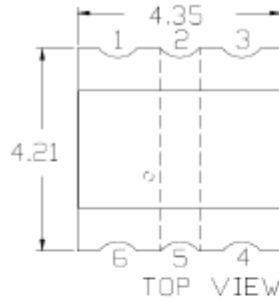
Feature:

- .2way 0degree transformer.
- .SMT part.
- .Packaging 2000pcs per reel.
- .used in 75 ohm systems.
- .weld connect.
- .260 degree compatible.

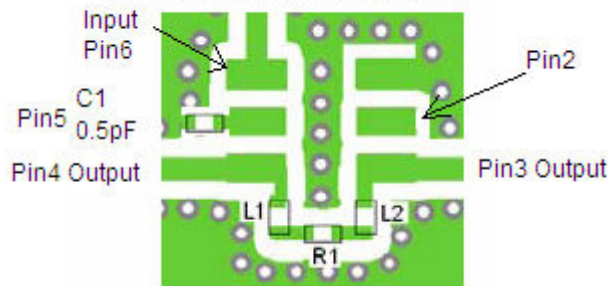
ROHS COMPLIANT



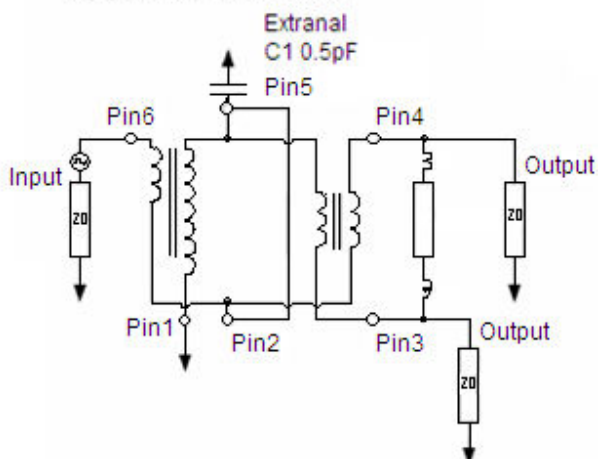
Base dimension



SUGGESTED PAD LAYOUT



Application Circuit



Reference	Manufacturer & p/n	Value
R1	Yageo RC0402FR-07186RL	186Ω
L1	TOKO LL1005-FHL8N2J	8.2nH
L2	TOKO LL1005-FHL8N2J	8.2nH
C1	Murata GRM1555C1HR50BA01D	0.5pF



LH Corporation

立华电子

立华电子

SL018008-2W-1TL 5-1250MHZ 2Way 0° Divider

Rev_B

Description:

. LH SL018008-2W-1TL is a 2way 0°splitter RF transformer.

Low cost SMT transmission transformer designed high volume applications.

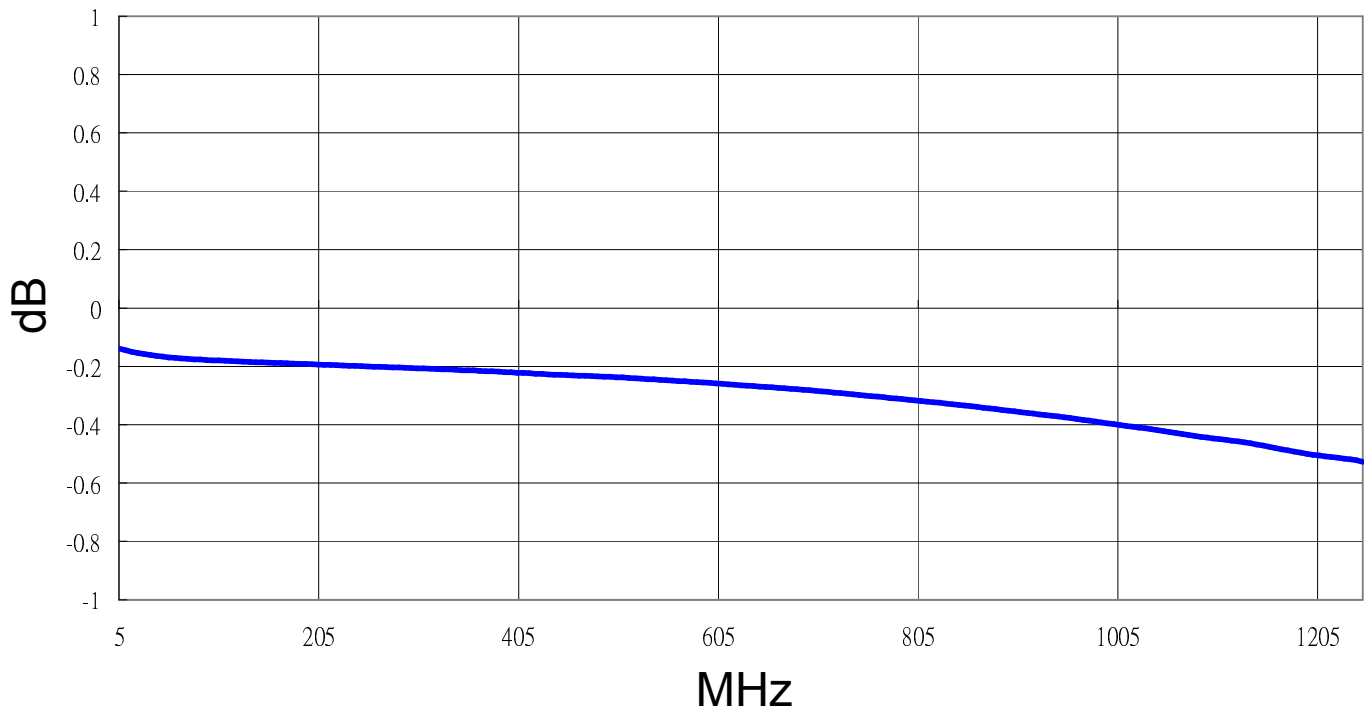
PIN CONFIGURATION	
PIN	FUNCTION
1	GND
2,5	0.5pF external
3	Output1
4	Output2
6	Input

Electrical Specifications: TA=25°C, Zo=75Ω Pin=0dbm

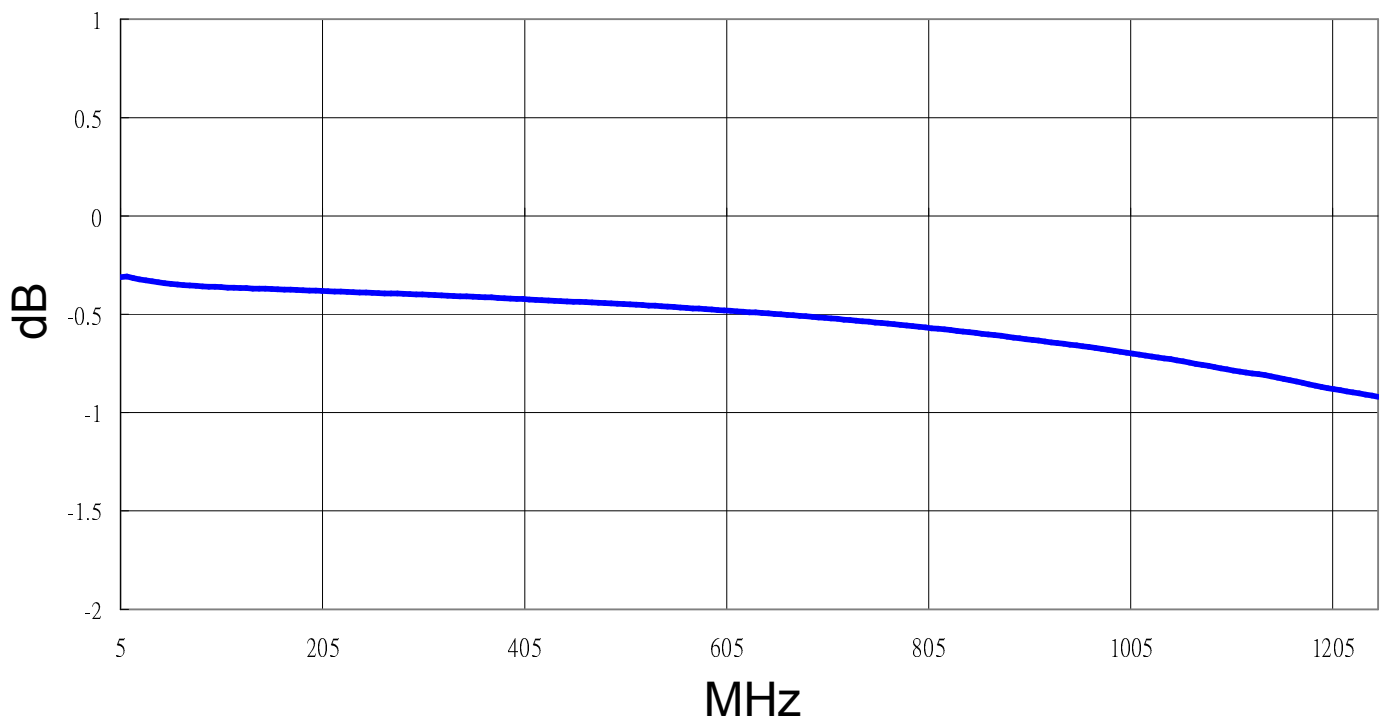
Parameter	Test Conditions	Units	Min.	Typ.	Max.
Insertion loss1 Pin6-4	5-500MHz	dB	---	0.3	0.5
	500-1250MHz	dB	---	0.7	1.2
Insertion loss1 Pin6-3	5-500MHz	dB	---	0.5	0.7
	500-1250MHz	dB	---	1.0	1.4
Phase Unbalance	5-1250MHz	degree	----	1.0	+/-3.0°
Amplitude Unbalance	5-500MHz	dB	---	0.2	+/-0.3
	500-8700MHz	dB	---	0.3	+/-0.6
	870-1250MHz	dB	---	0.7	+/-1.3
Input return loss	5-500MHz	dB	20	33	---
	500-1000MHz	dB	20	25	---
	1000-1250MHz	dB	20	22	---
Output return loss1 Pin4	5-870MHz	dB	20	30	---
	870-1250MHz	dB	18	20	---
Output return loss Pin3	5-500MHz	dB	20	25	---
	500-1250MHz	dB	18	19	---
Isolation	5-300MHz	dB	30	35	---
	300-1250MHz	dB	28	33	---
Input Power		1W			
Internal Load Dissipation		0.125W			
Operating Temperature Range		-40°C Min		+85°C Max	

performance.

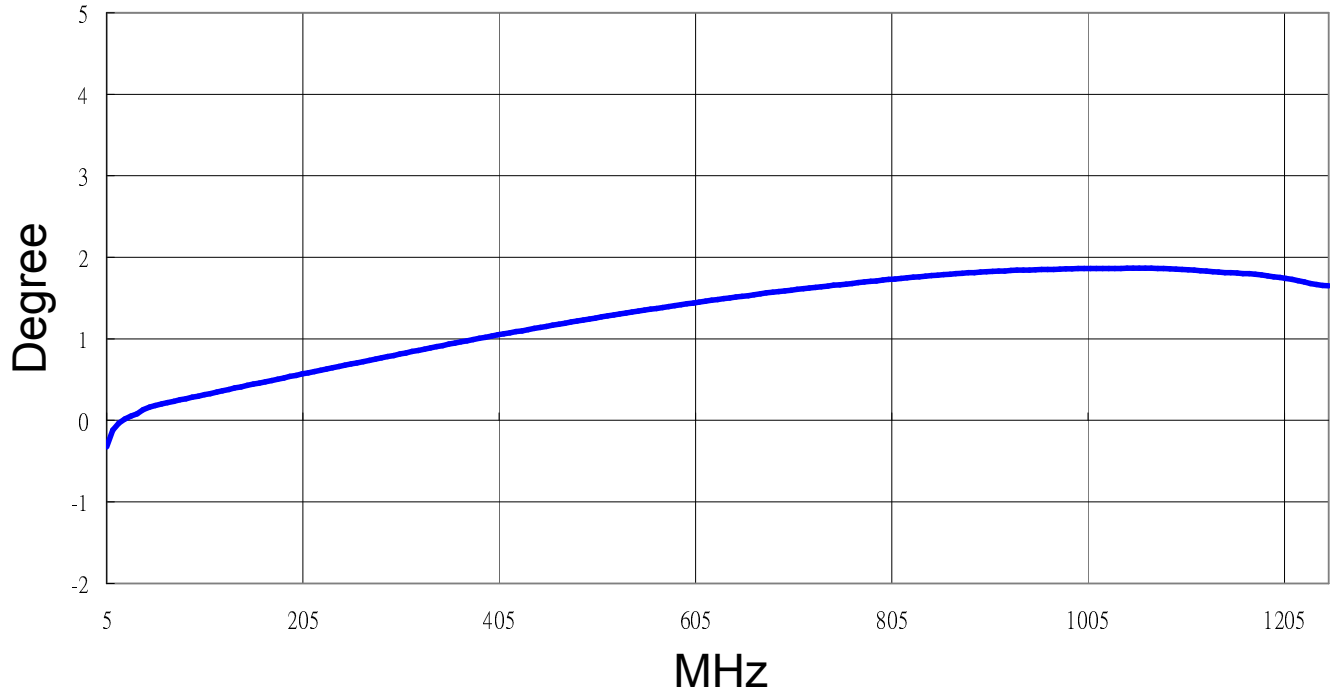
Insertion Loss 6-4



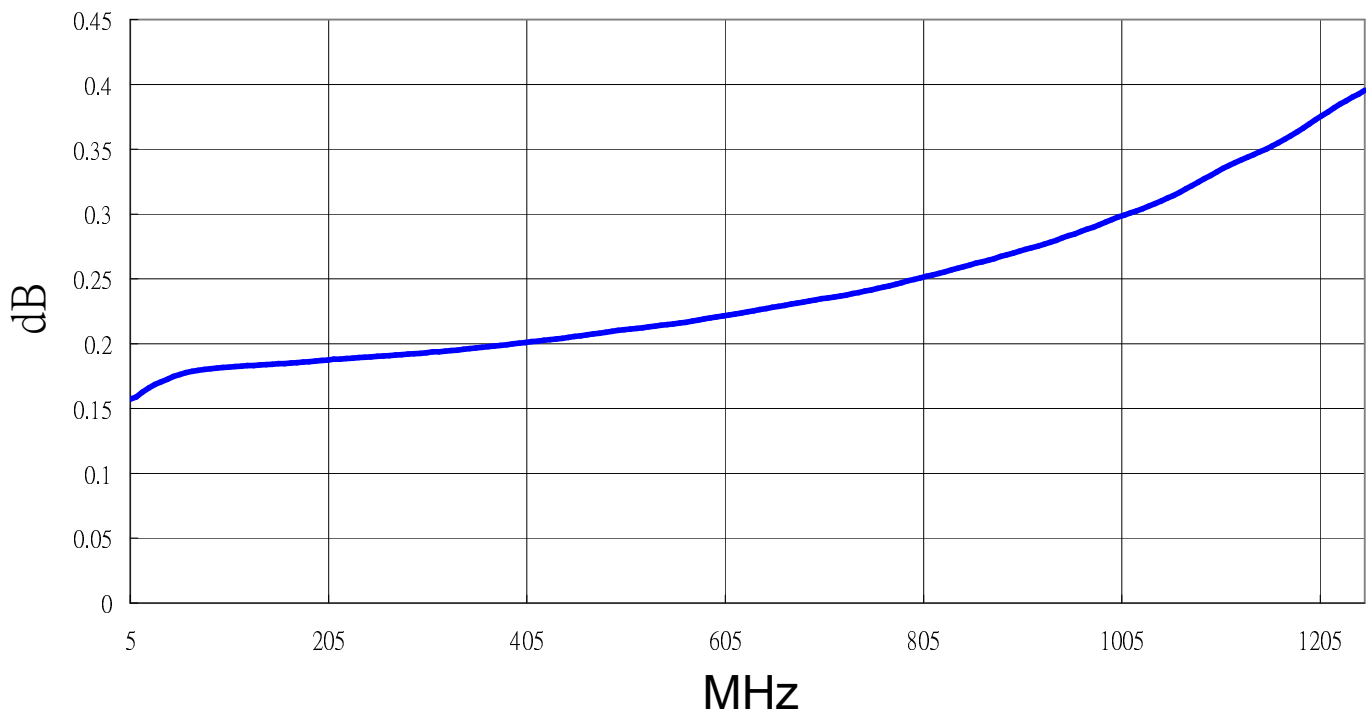
Insertion Loss 6-3



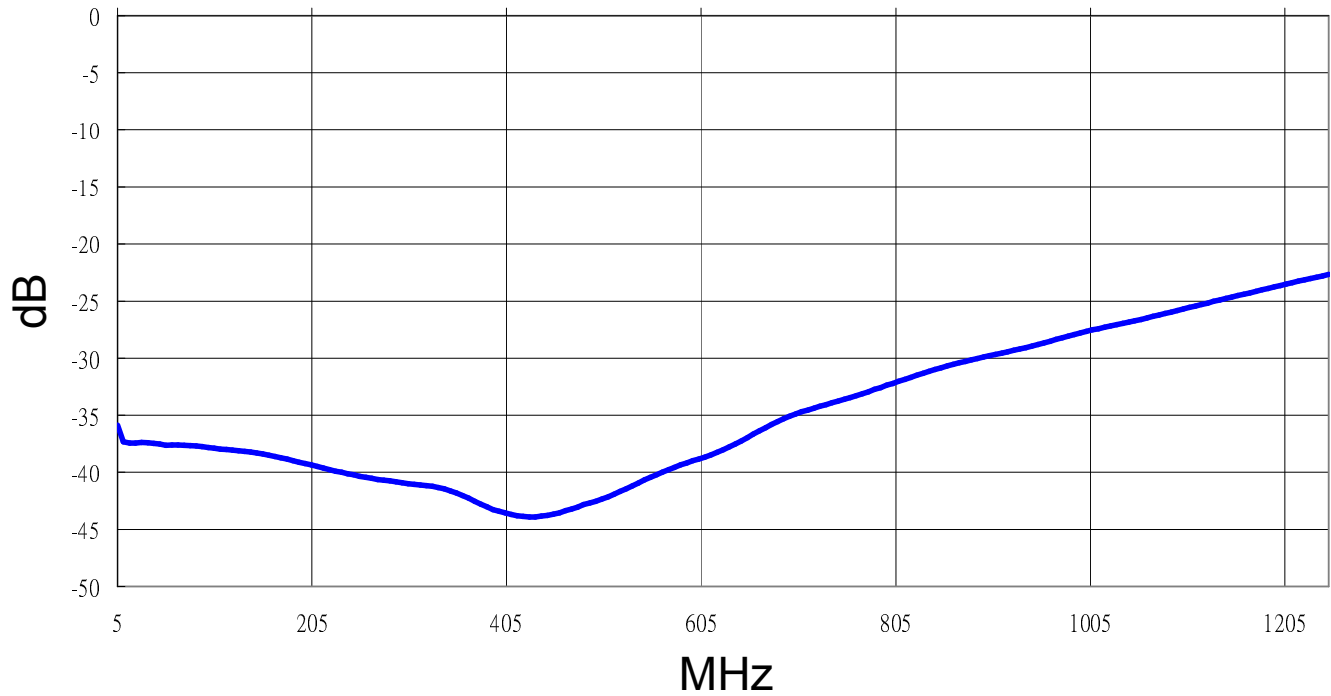
Phase



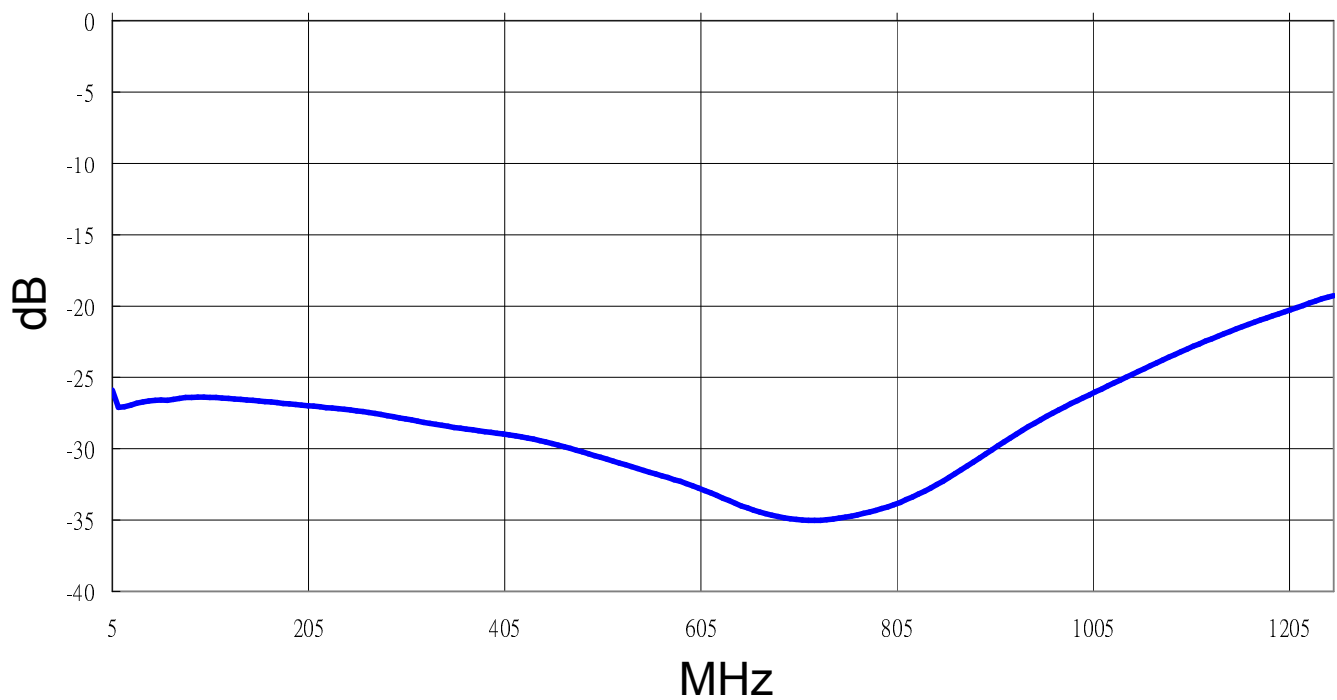
Amplitude



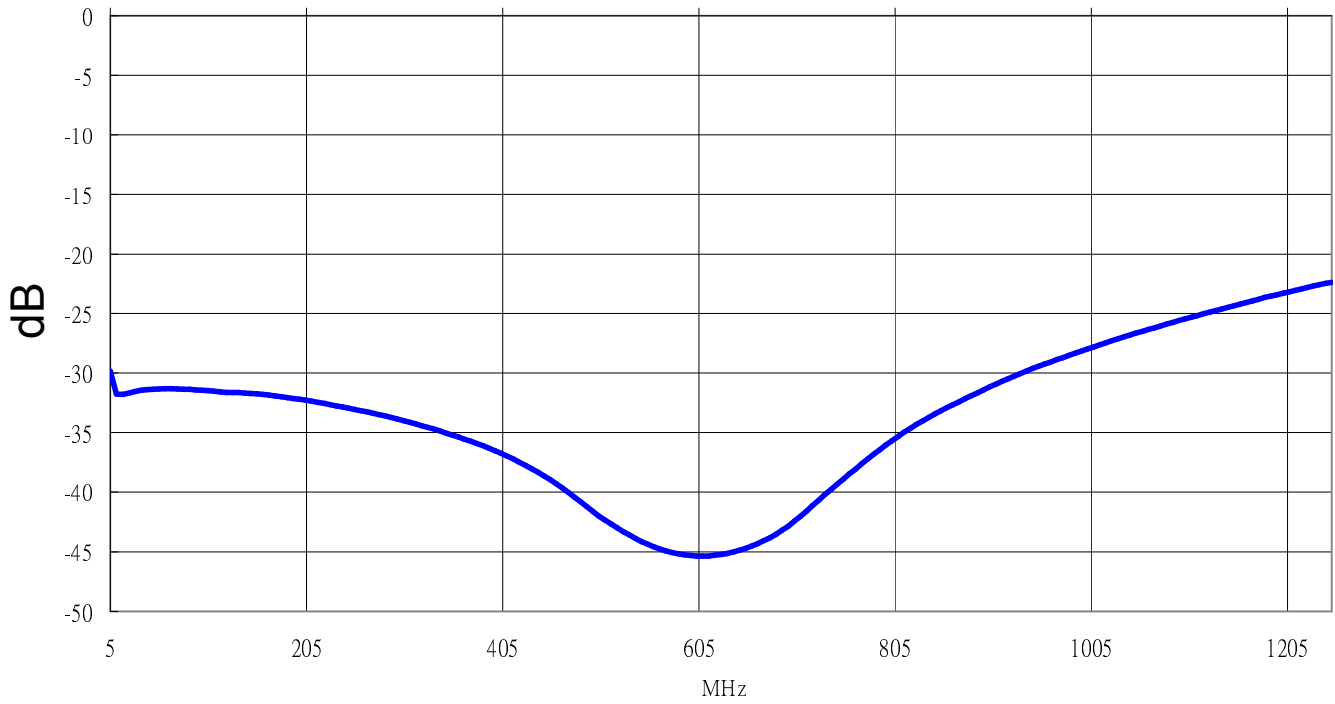
Input Return Loss



Output Return Loss Pin3



Output Return Loss



Isolation

